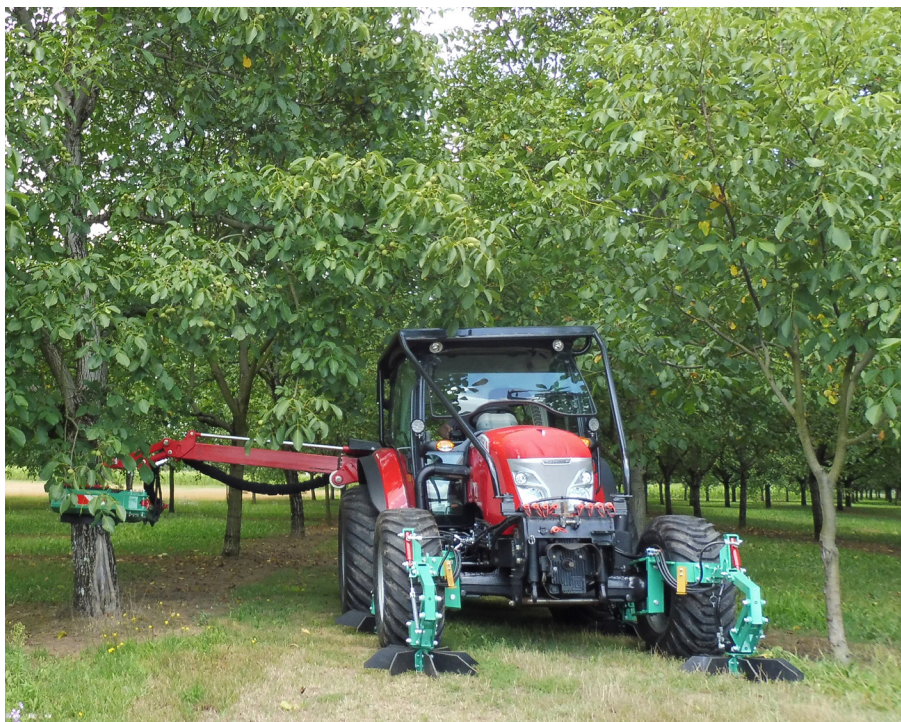


# SHAKER

# VHT



Orders  
electric  
(in the tractor)



*Manufacturer of solutions for the harvest and work of the fruits*



AMB Rousset  
impasse du Tilleul  
38470 BEAULIEU - France



Tél : +33 (0) 4 76 36 73 73  
Fax : +33 (0) 4 76 36 70 82  
E-mail : [export@ambrousset.com](mailto:export@ambrousset.com)  
[www.amb-rousset.com](http://www.amb-rousset.com)



## General specifications

The fastest shaker, because the tractor maneuver very little under the trees.

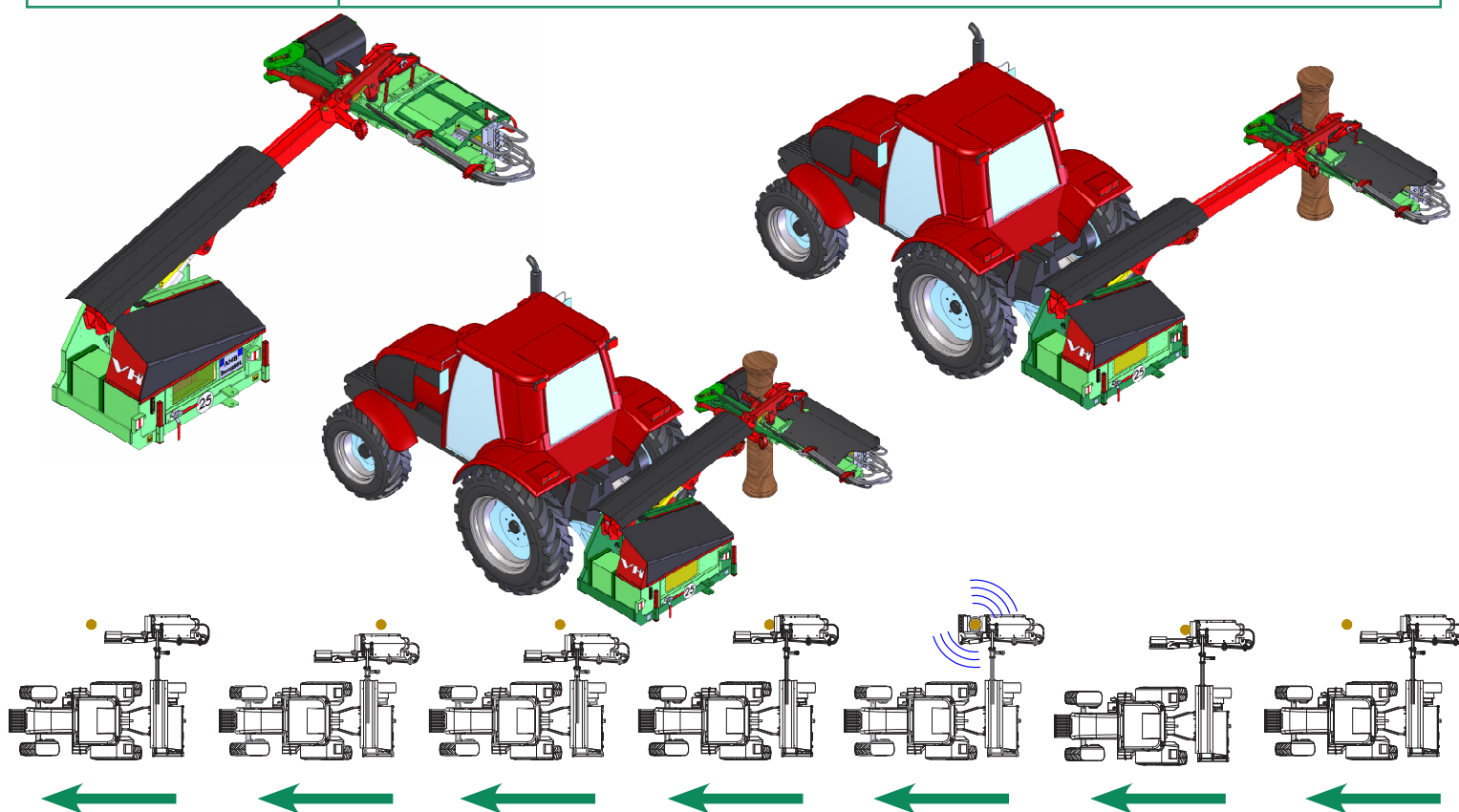
Equipped with brushes in front of the wheels of the tractor, this vibrator offers a work equivalent to that of a self-propelled, for a cost 4 times lower.

It is designed to shake nuts trees with its star vibration to not hurt the tree while ensuring optimal work. All his movements are hydraulic and adjustable. Telescopic type, it combines robustness, high efficiency and softness. The ergonomic control handle inside the tractor provides a comfortable user experience.

The hollow pads, filled with soft material are offered as an option. They are particularly suitable for harvesting fresh nuts and vibrating young trees.

## Technical specifications

<b>Yield</b>	Between 180 & 300 trees per hour
<b>Power required</b>	Minimum power 75 HP Minimum external wheel-width 2,20 m Minimum weight 3 tons
<b>Transmission</b>	Masses are driven by two hydraulic engines which gives a full dynamism at the starting up Piston pump
<b>Oil tank</b>	Mineral oil 140 liters
<b>Cockpit</b>	Electric distributor
<b>Vibration head</b>	By star movement ☆(omnidirectionnelle) suspended by 4 chains Hydraulic adjustment of the orientation
<b>Diameter of the trunks</b>	570 mm max
<b>Stroke of the runner</b>	1,50m
<b>Head shifting</b>	From 1 m to 2,50 m between the tree and the exterior of the wheel
<b>Vibration height</b>	From 0,50 m to 3,50 m height
<b>Options</b>	American pads - rotary brushes - load transfer wheel
<b>Security</b>	Conform to CE standard
<b>Dimensions</b>	Length : 1,15 m - Width : from 3,60 m to 5,10 m (offset of the clamp 1.50m) Height : 1,16 m - Road driving position : Width: 2,20 m - Height : 3,40 m
<b>Weight</b>	1 720 Kg



## Differences between

### VHT STANDARD



*Clamp opening by jack*



*Adjustment of the «wrist» by hydraulic cylinder*

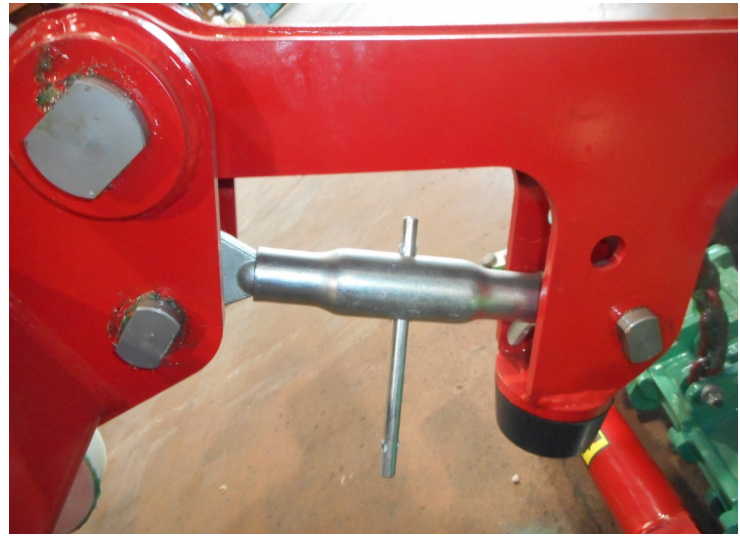


*Slide stroke = 1500 mm*

### VHT ECO



*The clamp does not open*



*Wrist adjustment by manual jack*



*Slide stroke = 900 mm*

